

# AC 3200

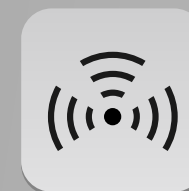
## Wireless Tri-Band Gigabit Router *Archer C3200*

### Highlights

- **Tri-Band technology** – Three separate Wi-Fi bands for connecting more devices to your network without a drop in performance
- **Up to 3200Mbps Wi-Fi speed** – 600Mbps over 2.4GHz and 1300Mbps over two 5GHz bands
- **Smart Connect**– Helps devices run faster by assigning them to the best channel to balance network demand
- **1GHz dual-core CPU and three co-processors** – Handle simultaneous connections without interruption
- **Maximum Coverage and Stability** – Six high-performance antennas maximize coverage area and stability



AC3200



Tri-Band



Smart  
Connect



6 Antennas



Dual Core  
1 GHz CPU



Beamforming  
Technology



TP-LINK  
Tether App





# Features



## Speed

- **Blazing Fast Wireless Speed** – Combined wireless speeds up to 3.2Gbps at 2.4GHz & 2 \*5GHz bands
- **Dual-core CPU & 3 co-processors** – 1GHz dual-core CPU and three co-processors handle simultaneous connections without interruption
- **Gigabit Wired Speed** – Full shielded gigabit ports ensure ultrafast data transfer speeds
- **Support 802.11 ac** – Offering 3 times faster data rate than 802.11n in a single stream



## Wi-Fi Range

- **Ultimate Range & Reliable Wi-Fi** – Six high-performance external antennas greatly increase the Archer C3200's range and signal stability.
- **Laser-Focused Wi-Fi** – Beamforming technology further improves the router's coverage by helping it locate wireless devices to form stronger, more reliable connections.



## Reliability

- **Tri-band technology** – Creates three separate Wi-Fi bands for connecting more devices to your network without a drop in performance
- **Smart Connect** – Helps devices run faster by assigning them to the best channel to balance network demand
- **IP QoS** – Advanced QoS automatically recognizes & prioritizes streaming & gaming applications

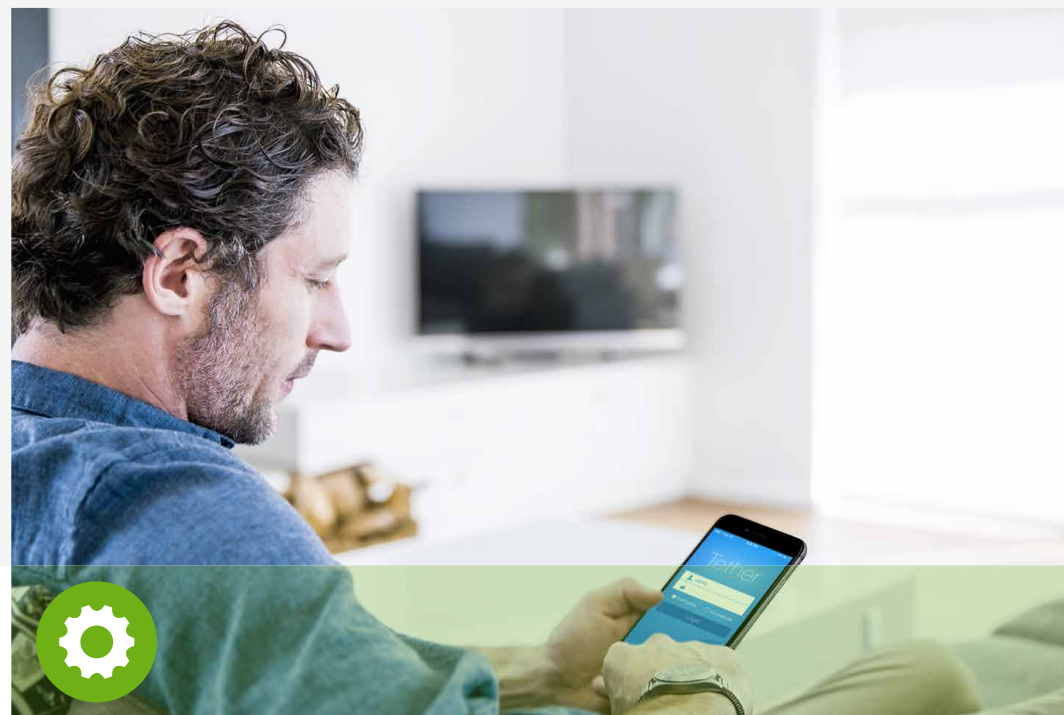


# Features



## Easy Sharing

- **Dual USB Ports for Fast Sharing** – With one ultra-fast USB 3.0 port and one USB 2.0 port, you can access and share a printer as well as your files and media locally. Via the router's FTP server, you can also have access to your files & media with networked devices remotely
- **10x Faster Transfer Speed** – The USB 3.0 port provides up to 10x faster USB hard drive access than earlier USB 2.0 connections
- **Built-in Print Server** – Supports wireless printing from multiple computers (works in conjunction with a USB Printer)
- **Built-in Media Server** – Allows users to play music, video and view photos



## Ease of Use

- **3-Step Quick Installation** – Easy Setup Assistant supporting multiple languages provides a quick & hassle free installation
- **Fast Encryption** – Easy one-touch WPA wireless security encryption with the WPS button
- **Easy On/Off** – Wi-Fi On/Off Button allows users to turn wireless radio on or off
- **Power On/Off** – Convenient power saving
- **Hassle-free Management with Tether App** – Tether App allows easy network management at your fingertips



## Security

- **Access Control** – Guest Network Access provides secure Wi-Fi access for guests
- **Parental Control** – Establish restricted access policies for all connected devices
- **Easy Bandwidth Management** – IP-based Bandwidth Control makes it easier for you to manage the bandwidth of connected devices
- **VPN Support** – Secure access to your home or office network from remote devices
- **Encryptions for Secure Network** – WPA-PSK/WPA2- PSK encryptions provide active defense against security threats for user networks

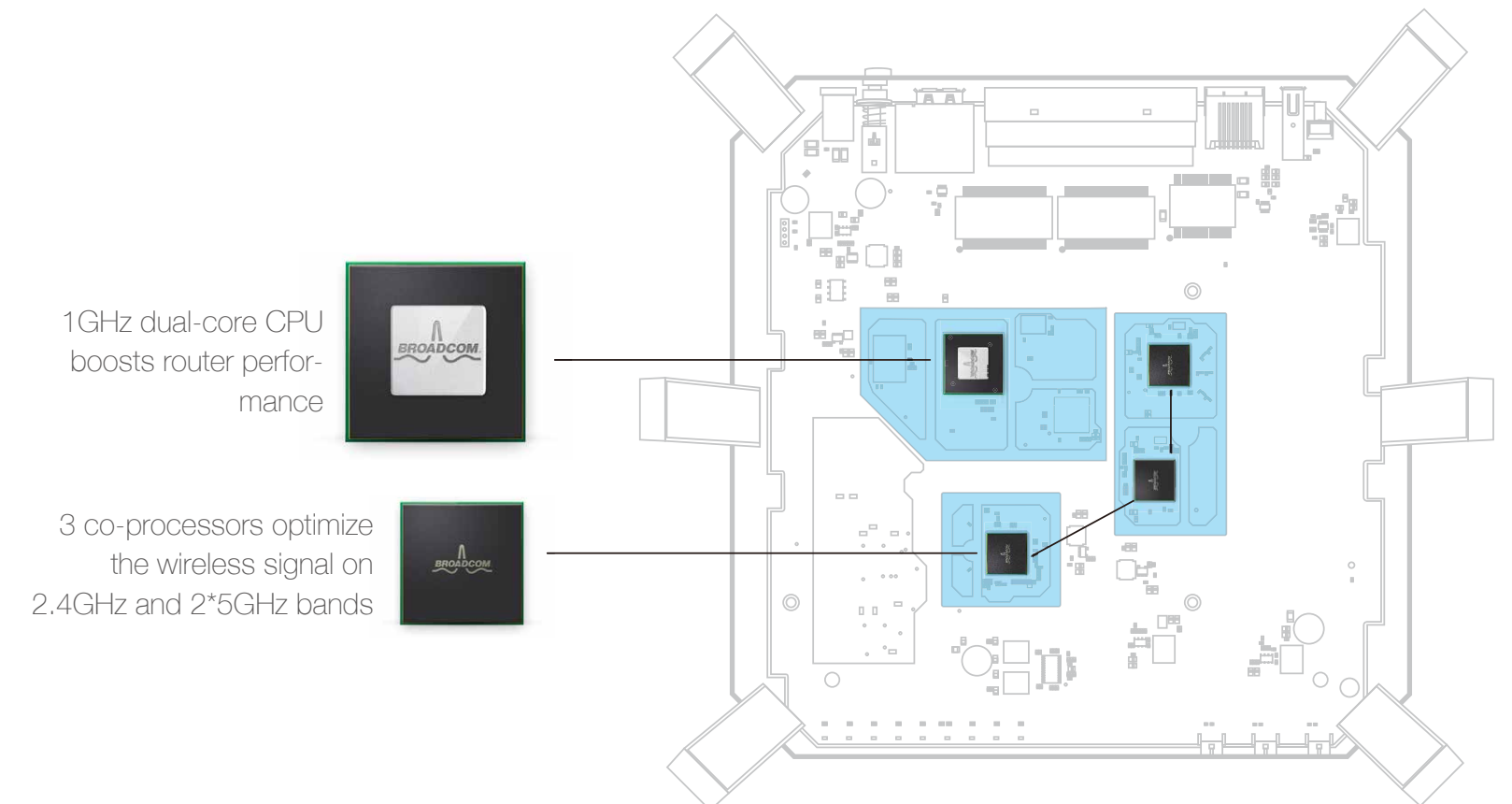
## More Wi-Fi for More Devices

The Archer C3200 uses Tri-Band technology to run three separate Wi-Fi channels at once, creating a network that can connect to more devices without a trade-off in performance. Smart Connect helps devices run even faster by assigning them to the best available channel to balance network demand.



## Run All Your Devices At Once

A powerful 1GHz dual-core CPU and three co-processors easily handle the demand made on the Archer C3200's network when multiple users are browsing, streaming, and gaming all at the same time.

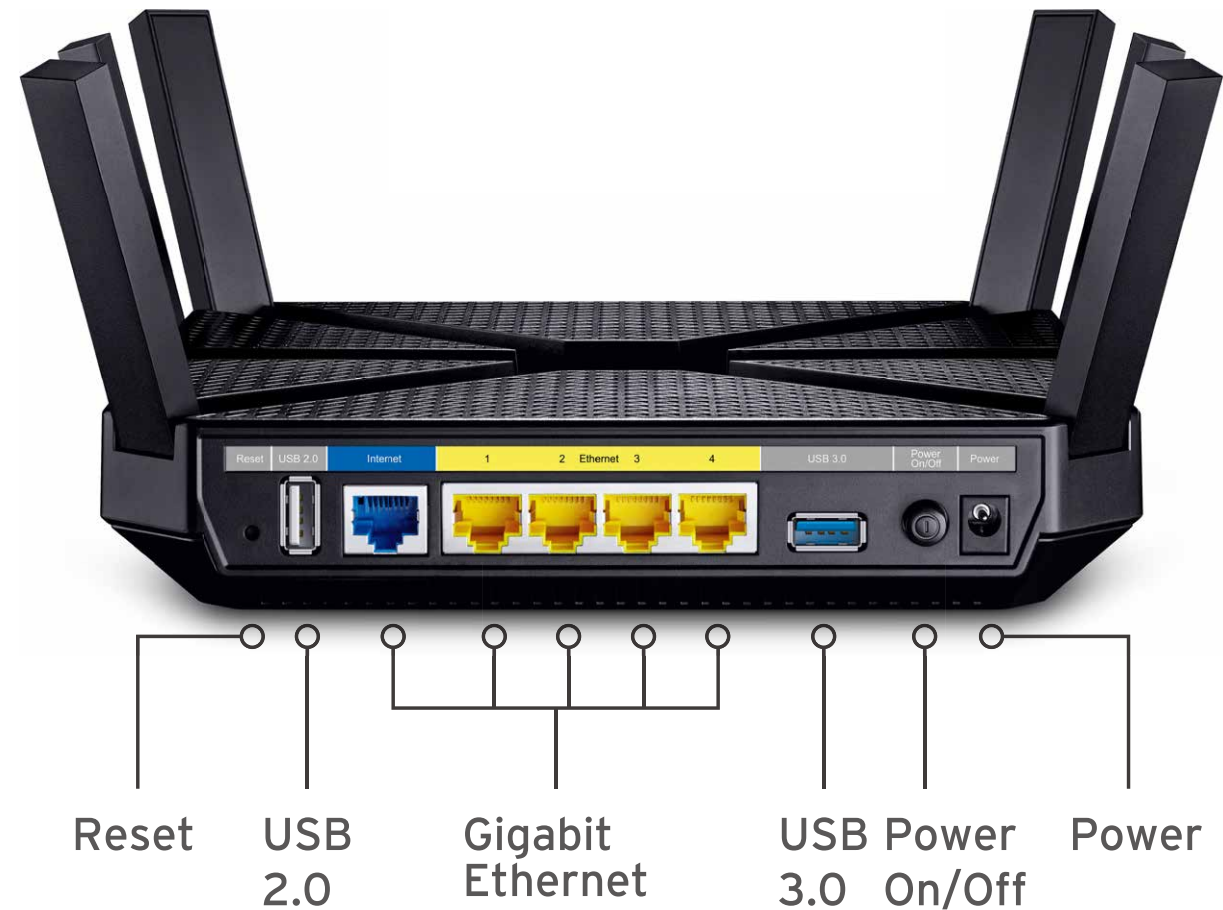




# Specifications

## Hardware

- **Ethernet Ports:** 4 \* 10/100/1000Mbps LAN Ports & 1 \* 10/100/1000Mbps WAN Port
- **USB Port:** 1 USB 3.0 Port + 1 USB 2.0 Port
- **Button:** Wireless On/Off Button, Power On/Off Button, LED On/Off Button, WPS Button, Reset Button
- **External Power Supply:** 12V/5A
- **Dimensions (W x D x H):** 7.9 X 7.9 X 1.5 in. (200 X 200 X 39mm)
- **Antenna:** 3 dual band Fixed antennas & 3 single band Fixed antenna



## Wireless

- **Wireless Standards:** IEEE 802.11ac/n/a 5GHz, IEEE 802.11b/g/n 2.4GHz
- **Frequency:** 2.4GHz and 5GHz Band1/Band4
- **Signal Rate:** 5GHz Band1- Up to 1300Mbps, 5GHz Band2- Up to 1300Mbps, 2.4GHz- Up to 600Mbps
- **Transmit Power:** CE: <20dBm(2.4GHz), <23dBm(5GHz)  
FCC: <30dBm
- **Reception Sensitivity:** 5GHz: 11a 6Mbps: -94dBm  
11a 54Mbps: -76dBm  
11ac HT20: -68dBm  
11ac HT40: -64dBm  
2.4G: 11g 54Mbps: -77dBm  
11n HT20: -73dBm  
11n HT40: -71dBm
- **Wireless Function:** Enable/Disable Wireless Radio, WMM, Wireless Statistics
- **Wireless Security:** 64/128-bit WEP, WPA/WPA2, WPA-PSK/WPA-PSK2 encryption
- **Guest Network:** 2.4GHz guest network × 1, 5GHz guest network × 2

# Specifications

---

## Software

---

- **WAN Type:** Dynamic IP/Static IP/PPPoE/PPTP(Dual Access)/L2TP(Dual Access)
- **DHCP:** Server, Client, DHCP Client List, Address Reservation
- **Quality of Service:** WMM, Bandwidth Control
- **Port Forwarding:** Virtual Server, Port Triggering, UPnP, DMZ
- **Dynamic DNS:** DynDns, NO-IP
- **VPN Pass-Through:** PPTP, L2TP, IPSec
- **Access Control:** Parental Control, Local Management Control, Host list, Access Schedule, Rule Management
- **Firewall Security:** DoS, SPI Firewall, IP Address Filter/Domain Filter, IP and MAC Address Binding
- **Protocols:** Supports IPv4 and IPv6
- **USB Sharing:** Supports Samba(Storage)/FTP Server/Media Server/Printer Server
- **Management:** Access Control, Local Management, Remote Management

## Others

---

### Package Contents

- AC3200 Wireless Tri-Band Gigabit Router Archer C3200
- Power supply unit
- Ethernet Cable
- Quick Installation Guide

### Certification

- CE, FCC, RoHS

### System Requirements

- Microsoft Windows 98SE, NT, 2000, XP, Vista™ or Windows 7, 8, 8.1, MAC OS, NetWare, UNIX or Linux
- Operating Temperature: 0°C~40°C (32°F ~104°F)
- Storage Temperature: -40°C~70°C (-40°F ~158°F)
- Subscription with an Internet Service Provider (for Internet access)

### Environment

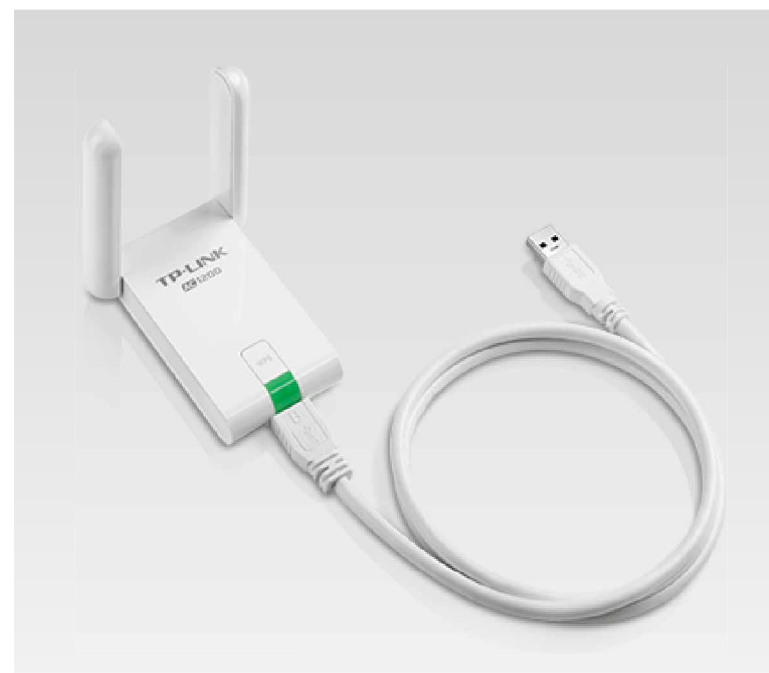
- Operating Temperature: 0°C~40°C (32°F ~104°F)
- Storage Temperature: -40°C~70°C (-40°F ~158°F)
- Operating Humidity: 10%~90% non-condensing
- Storage Humidity: 5%~90% non-condensing

# Others

## Ideal to use with



- AC1200 Wireless Dual Band USB Adapter Archer T4U



- AC1200 High Gain Wireless Dual Band USB Adapter Archer T4UH

## Similar Products



- AC1900 Wireless Dual Band Gigabit Router Archer C9



- AC1750 Wireless Dual Band Gigabit Router Archer C7



For more information, please visit

<http://www.tp-link.com/en/products/details/?categoryid=&model=Archer+C3200>

or scan the QR code left

Specifications are subject to change without notice. TP-LINK is a registered trademark of TP-LINK Technologies CO., Ltd. Other brands and product names are trademarks or registered trademarks of their respective holders. No part of the specifications may be reproduced in any form or by any means or used to make any derivative such as translation, transformation, or adaptation without permission from TP-LINK Technologies CO., Ltd. Maximum wireless speed of up to 1900Mbps is the theoretical data rate derived from IEEE standard 802.11 specifications. Actual data throughput and wireless coverage will vary due to network conditions and environmental factors including volume of network traffic, building materials and construction, network overhead, actual data throughput rate, and wireless coverage. TP-LINK makes no express or implied representations or warranties about this product's compatibility with any future standards. 802.11ac 1300Mbps is approximately 3 times faster than 802.11n 450Mbps. 2.4GHz Performance Mode requires 256 QAM support on Wi-Fi client.

[www.tp-link.com](http://www.tp-link.com)