

## 2 VoIP Port Wireless ADSL2+ / Ethernet Gateway



### 3G Failover | USB Host Plug & Share | AirTouch | Ethernet WAN

- Air 6372 is offering **802.11n** wireless solutions that can provide ultra reliability, predictable bandwidth and unprecedented high speed performance.
- Continuous Internet connection. Failover to 3G connection if ADSL or Ethernet problem occurs. 3G support is provided by 3G USB dongle.
- Complete **push-button wireless network set up** and configuration. Simply pushing the "AirTouch" button on Air 6372 is all that needed to configure the wireless connection.
- The **Ethernet WAN** port provides for high speed Ethernet To The Home connections, up to 100 mbps.
- **USB Plug&Share** feature allows users to attach an external disk drive and/or printer and share it on the network without having to dedicate a computer for this function.
- **Media Server:** AirTies **UPnP AV / DLNA** compliant Media Server feature allows you to attach an external disk drive to your AirTies device and share it on the network. Air 6372 can wirelessly stream the media, movies, photos, music on the attached disc using to TVs and players capable of displaying it.

### VoIP Features

- Two FXS ports to allow support for two telephones.
- Two simultaneous VoIP calls.
- Reliable Audio Quality (QoS).
- **Call Features** (CLIP/CLIR, Call Waiting, Call Forwarding, Speed Dial.)

### Other Features

- 1 Port **USB 2.0 Host Plug & Share** (File and Printer Sharing Support, 3G WAN support, Bittorrent')
- **5 port Fast Ethernet**
- **IPTV Support**
- **1x1 802.11n wireless**
- **Wireless MESH** support to allow for your network to be expanded with one button **AirTouch** setup.

### Enjoy low-cost calls over the Internet

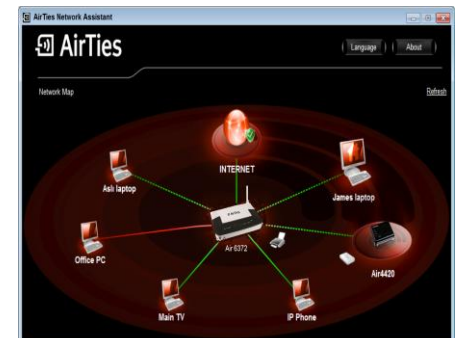
**Internet Telephony:** Your device supports VoIP (Voice Over IP) with its two FXS. You can enjoy low-cost telephone calls with analogue phones connected to the FXS ports. Numerous call features are supported on your device such as call waiting, call forwarding, speed dial and many more.

### AirTies Network Assistant

More and more devices have the ability to be connected to networks, from netbooks, notebooks and computers to televisions, media players and mobile phones. With this rise in the number of devices that are connected to the home network and the greater number of network components and configuration required to enable this, it is becoming increasingly difficult to setup and keep home networks running effectively. Going forward, more consumer devices will become network enabled, meaning that this situation will only get worse.

There are various techniques and tools that are available to monitor and manage networks. The difficulty is that these tools require a high level of technical knowledge and experience to understand and use, which is considerably more than the average home user should be expected to possess.

AirTies Network Assistant is a novel and innovative application that runs on users' Personal Computers and allows all users to setup, configure, monitor and control their home network, whatever their technical understanding is. All functionality is delivered in a user friendly way and is very easy to use.



## Specifications

### Main Features

- **All-in-one solution:** ADSL2+ Router, Ethernet WAN Router, wireless access point, Firewall, 5 Ethernet ports (4 Ethernet LAN and 1 Ethernet WAN port)
- **Modem:** ADSL2+ gateway (24Mbps download/ 4Mbps upload) optimized for your local ADSL service provider
- **Router:** DHCP server, DDNS, NAT, NAPT, Static router, VPN pass-through, 802.1Q VLAN, CoS (802.1P)
- **3G WAN and back up** support via the USB Host ports with supported sticks.
- **Firewall:** Advanced Anti-DoS SPI Firewall; URL, IP and MAC address based filtering,
- **“N-Speed” solution to getting past concrete walls with a high speed wireless connection:** wireless access point compliant with the **802.11n** standard
- **AirTouch:** Simple setup button to securely connect supported devices.
- **Extending Wireless Coverage at the Touch of a Button:** With AirTouch technology, it is now very simple to setup an AirTies Mesh Network and extend wireless coverage area.
- **Wireless Access range and Mesh Technology:** AirTies Mesh Technology support for extending coverage area by using additional AirTies wireless access point devices.
- **Backward compatible:** Compatible with 802.11b/g wireless standards
- **MSSID (Multi SSID)** Multiple SSIDs can be created to allow different users access to the Internet / network
- **IPTV-ready:** The Air 6372, with its IP QoS, VLAN, WAN-to-VLAN mapping and IGMP support, is ready for the newest, state of the art services offered over the Internet such as IPTV
- **USB Plug and Share** feature gives you printer and file sharing capability throughout your entire network from a single point
- **Media Features: DLNA and UPnP A/V Media** compatible media server, BitTorrent1.
- **Advanced Wireless Security:** WPA2-PSK, WPA2-802.1x, WPA-PSK, WPA-802.1x, WEP wireless encryption standards support
- **Automatic Wireless Security configuration:** AirTies Network Assistant automatically configures wireless security settings for the router and the PC that is used for setup.
- **Firewall:** Advanced anti-DoS SPI Firewall; MAC, URL and IP address based filtering for Internet access
- Easy setup with the animated **AirTies Network Assistant Software:** Network Diagram, Device Control, Troubleshooting, Automatic firmware and software upgrade, download / upload counter.
- **Automatic Firmware Upgrade:** Automatic firmware upgrade capability with the AirTies Network Assistant and the modem user interface. It is important to use the latest firmware to get the best possible performance out of your router.
- **Easy Update:** Automatic firmware upgrade through TR-069 ACS and/or AirTies Firmware upgrade server. Firmware (software) upgrades via the Advanced Settings Web interface.
- **Easy setup and management:** Universal Plug and Play (UPnP), AirTies Easy Setup CD (for both ADSL and VoIP; with animated instructions), user-friendly AirTies Network Assistant Software and User Manual
- **Remote Management:** Auto-provisioning of LAN, and WAN setting via CWMP (TR-069, TR-098, TR-111, TR-064<sup>1</sup>) support. Also supports, Web, Remote Management and Telnet.
- **Uninterrupted Technical Support:** 7/24 AirTies Call Centre and Technical Support (engineering support by the AirTies R&D team when needed)
- **3 year extended warranty**
- **Designed to be compatible with your local ADSL infrastructure.**

### VoIP Features

- **Call Features:** Caller ID (CLIP), Calling Line Identification Restriction CLIR), Call Waiting, Call Forwarding, Speed Dial, CLID Blocking<sup>1</sup>, 3-way call<sup>1</sup>, Call Back on Busy<sup>1</sup>, Distinctive Ringing<sup>1</sup>, Call Waiting Caller ID<sup>1</sup>, Call Blocking<sup>1</sup>, Message Waiting Indicator<sup>1</sup>, Last Call Return<sup>1</sup>, Repeat Dial<sup>1</sup>, Call Conferencing<sup>1</sup>, Voice Mail<sup>1</sup>
- **FCT Support<sup>1</sup>**
- SIP (RFC 3261/3264), SDP (RFC 2327)
- RTP (RFC 1889/3550), RTCP (RFC1890)
- G711, G.729AB, G.723.1<sup>1</sup>, G.722<sup>1</sup>, G.726<sup>1</sup> codec support
- Automatic prioritization of audio packets and high audio quality
- Call History
- Multiple SIP Account Support<sup>1</sup>
- Incoming Call divert options
- Redundant and Outgoing Proxy Supports
- Echo cancellation (G.165/168)
- Dial plan Options<sup>1</sup>
- **DTMF Relay:** RFC2833 and SIP INFO (RFC 2976) support
- G.711 fax pass-through
- T.38 IP fax protocol support
- PSTN Fax support – T.30
- Different dial and confirmation-tones when making VoIP calls

### IPTV Features

- 8 ATM PVC channel support
- VLAN Support (802.1Q)
- PVC-Port and PVC-SSID mapping feature
- IGMP Proxy support (v1,v2 and v3)
- IGMP Snooping feature
- ATM QoS (UBE,CBR,VBR-rt,VBR-nrt)
- Feature to obtain the required DHCP options from WAN and transmit to the STBs
- Differentiating the incoming service at a port and automatic port-PVC assignment based on service type
- TR-111 support



**Technical Properties**

- **ADSL Properties:** G.992.1 Annex A & ANSI T1.413 Issue2 (G.DMT), G.992.2 (G.Lite), G.992.3 ADSL2 (G.dmt.bis), G.992.5 (ADSL2+), RADSL (Rate Adaptive DSL), READSL,SIP (RFC 3261/3264)
- **Connection Protocols:** PPPoE, PPPoA, RFC1483 Encapsulation (IP Bridging, ve encapsulated routing), RFC2364 PPP over AAL5, classical IP over RFC1577 ATM, ATM QoS, OAM (L.610), RFC2366 multicast over ATM.
- **Router and Firewall:** Anti-DoS SPI firewall; URL, IP and MAC address filtering; Port forwarding; DMZ; VPN pass through (PPTP, L2TP, IPSec); Static and dynamic (RIPv1/v2) routing; DNS Proxy; DHCP server and client; NAT/NAPT; User Authentication (PAP/CHAP/MSCHAP) with PPP; up to 1024 NAT sessions, 802.1d (self-learning transparent bridging), CoS (802.1P), 802.1Q VLAN, PPTP VPN
- **Wireless transmit power:** Max 20 dBm EIRP @ 2.4GHz
- **Wireless security options:** WPA2-Enterprise, WPA2-Personal, WPA-Enterprise, WPA-Personal, WEP (64/128bit), MAC address filtering, SSID hiding
- **Wireless standards:** IEEE 802.11b, 802.11g, 802.11n, 802.11d, 802.11e, 802.11i standards compliant.
- **Wireless communication rates:** 1, 2, 5.5, 6, 9, 11, 12, 24, 36, 48, 54, 72
- **Frequency range:** ETSI 2400 MHz - 2483 MHz (13 channels with 3 not overlapping)..
- **LEDs:** Power, ADSL, Internet, WAN, Ethernet, Wireless, USB1, AirTouch, Phone1, Phone2
- **Ports:** 1xADSL (RJ11), 1-4 Ethernet LAN/ 1 Ethernet WAN (RJ45), 1xUSB Host, Power, 2 FXS (phone/ PBX, RJ11)
- **Reset button** to return to factory settings for ADSL or VOIP
- **AirTouch** button for simple setup and secure connection with WPS supported wireless devices
- **On/Off** button
- **UPnP** : Universal Plug & Play Internet Gateway Device
- **Mounting:** wall mount or desktop use.
- **Class 2 device**
- **Certificates and Standards:** CE

**Physical Characteristics**

- **Dimensions:**
- **Weight:**
- **Power:** 12V DC, 1.5A
- **Adapter operating voltage:** 100V-240V AC
- **Operating Temperature:** 0°C ~ 40°C
- **Storage Temperature:** -40°C ~ 70°C
- **Operating Humidity:** %10 ~ %90

**Minimum System Requirements**

- ADSL service on your phone line must be activated and working properly or Ethernet connection from ISP must be available.
- For wired use: a computer with an Ethernet adapter that supports TCP/IP.
- For wireless use: 802.11b/g/n wireless adapter or computer with wireless capabilities,
- For the Web UI Access and setup: Any versions of Linux, Windows or Mac operating systems,
- For AirTies Network Assistant Program: 32-bit Windows XP (SP2), Vista or Windows7 operating systems,
- The device does not need to be connected to a PC during normal operation.

1 will be available with firmware upgrade soon.

